

## SUBMITTAL SHEET

JOB NAME	ITEM TAG
JOB LOCATION	PART NUMBER
CONTRACTOR	DATE
ENGINEER APPROVAL	DATE

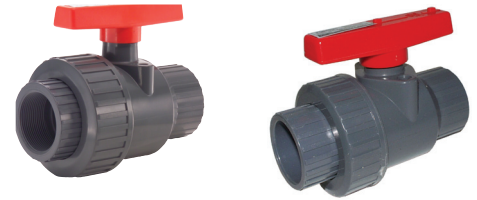
# PVC SINGLE UNION BALL VALVE

## Model T/S-645

### Working Pressure, Non Shock (PSI)

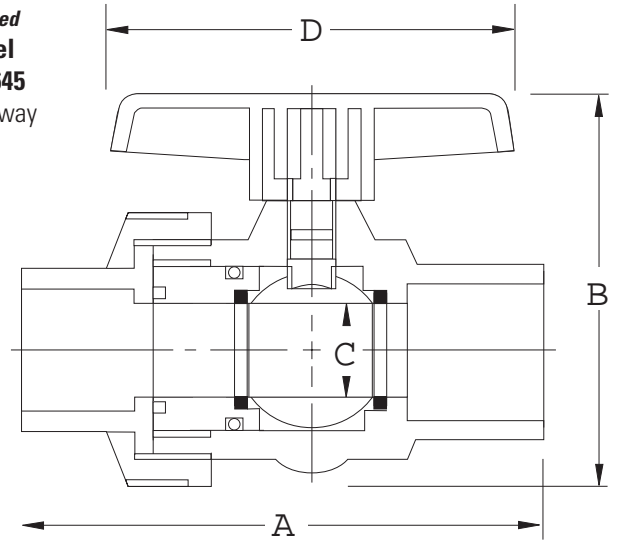
Cold working pressure (CWP): 150 PSI @ 73°F

Maximum service temperature: 140°F



**Pictured  
Model T/S-645**

**Pictured  
Model  
T/S-645  
Cut-away**



MATERIAL SPECIFICATION		
PART		MATERIAL
1	Handle	ABS
2	Stem packing	EPDM
3	Stem	UPVC
4	Ball	UPVC
5	Seats	*Teflon
6	Body	UPVC
7	Union nut	UPVC
8	End adapter	UPVC
9	O-ring	EPDM

DIMENSIONS				
Size	A	B	C	D
1/2"	3.78	2.76	0.51	3.07
3/4"	4.41	3.31	0.71	3.62
1"	4.81	3.90	0.91	3.94
1-1/4"	5.52	4.53	1.18	4.33
1-1/2"	5.91	5.44	1.50	4.77
2"	7.21	6.58	1.89	5.79