

## SUBMITTAL SHEET

JOB NAME	ITEM TAG
JOB LOCATION	PART NUMBER
CONTRACTOR	DATE
ENGINEER APPROVAL	DATE

## FLARE X MIP COUPLINGS

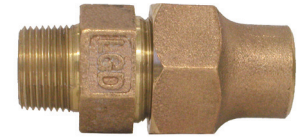
### Model T-4100

Above fittings conform to A.W.W.A.

C-800 underground service line valves and fittings

#### Working Pressure, Non Shock (PSI)

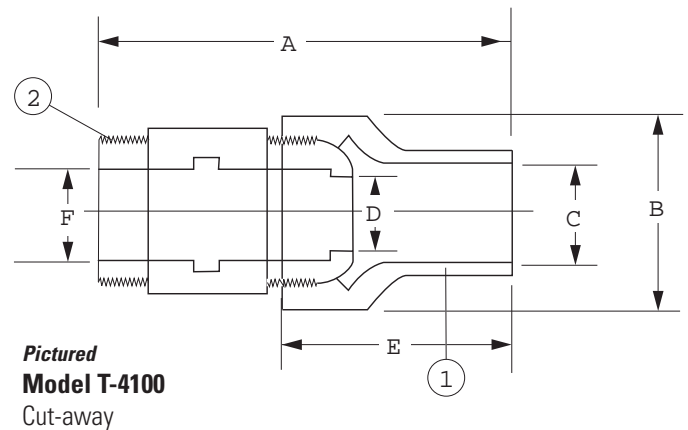
Cold working pressure (CWP): 100 PSI 3/4", 80 PSI 1 1/4"-2"



**Pictured  
Model T-4100**

#### DIMENSIONS T-31

Size	A	B	C	D	E	F
3/4"	3.26	1.53	0.90	0.75	1.73	0.75
3/4"x1"	3.29	1.53	0.90	0.75	1.73	1.00
1"	3.84	1.83	1.16	1.00	2.00	1.00
1"x3/4"	3.35	1.83	1.16	1.00	1.97	0.75
1-1/4"	4.17	2.39	1.40	1.25	2.34	1.25
1-1/2"	4.78	2.88	1.69	1.50	2.63	1.50
2"	5.67	3.57	2.18	2.04	3.42	1.91



#### MATERIAL SPECIFICATION

PART	MATERIAL	SPECIFICATION
1 Body	Bronze	ASTM B-62 UNS C83600/ C89836
2 Flare nut	Bronze	ASTM B-62 UNS C83600